

ChowBELL



User Manual for video doorbell



www.tmt-automation.com

Index

Introduction of the ChowBELL	P2
Product Overview	P2
Kit contents	P3
Specifications	P3
Hardware installation_Wi-fi	P4
Hardware installation_LAN cable	P5
Pairing indoor chime with ChowBELL	P6
Apply for a new Chow account	P7
Connect ChowBELL to Chow! App	P8
Owner shares the ChowBELL to other users	P10
Connect your ChowBELL with a gate opener	P12
FAQ	P13



Introduction of the ChowBELL

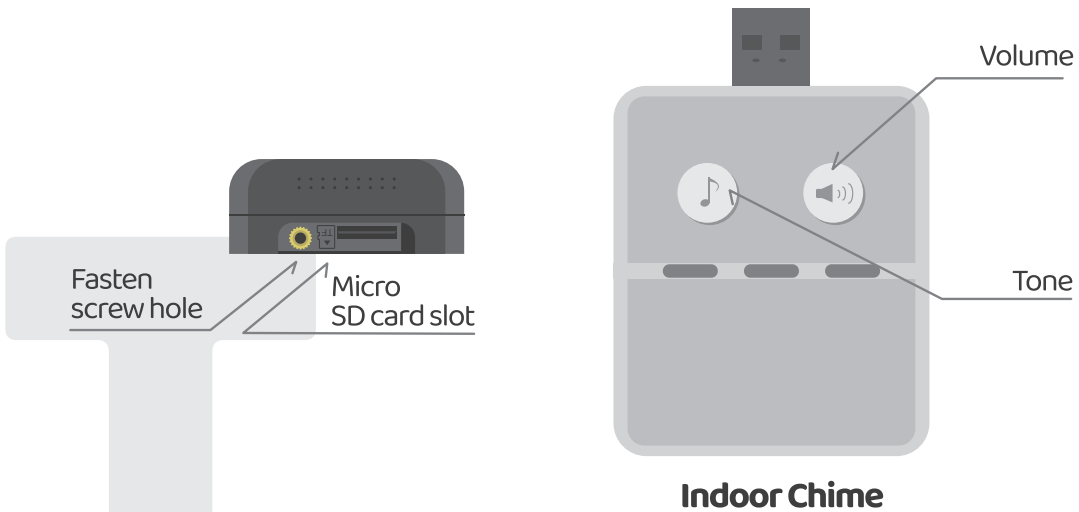
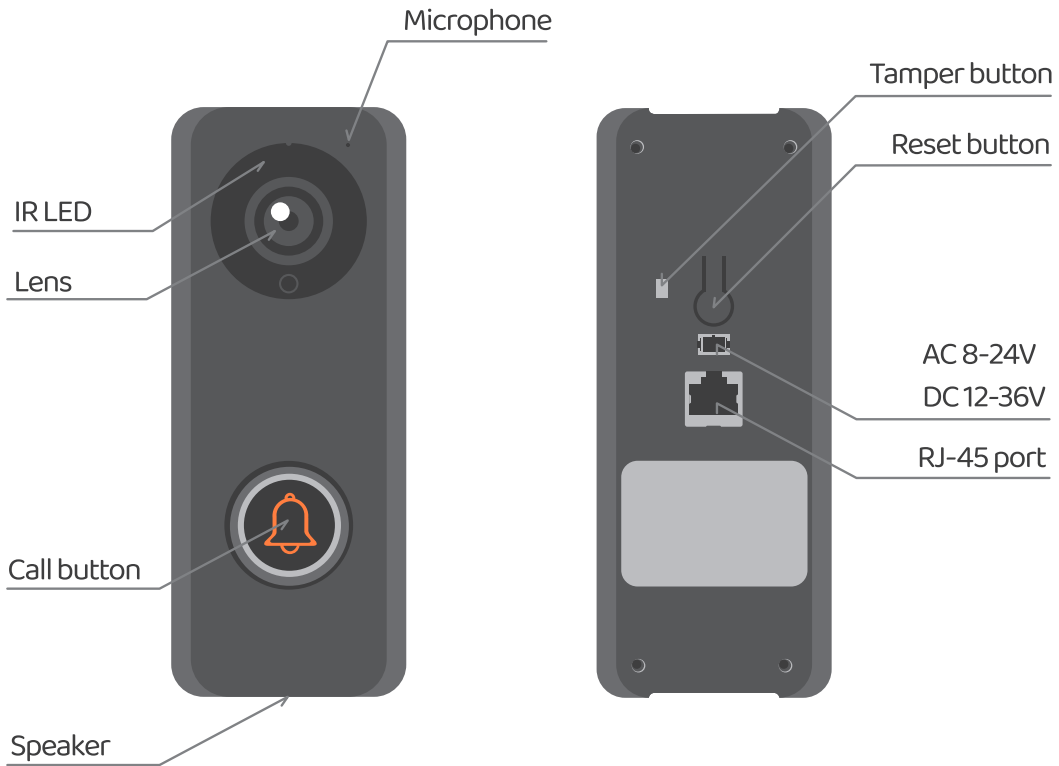
This user manual is designed to provide indications of the ChowBELL and its features and functions.

ChowBELL is a device which can connect to App! and provide two-way audio communication.

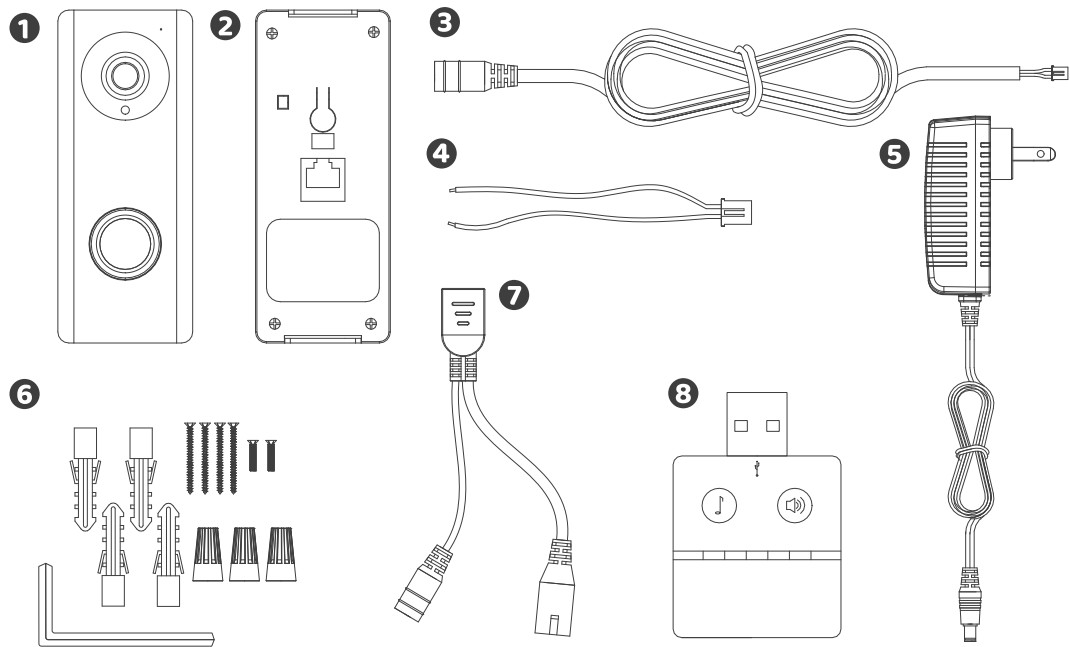
ChowBELL can be intergrated with other Wi-Fi gate openers on the Chow! App.

Product Overview

Video Doorbell



Kit contents



- 1** ChowBELL **2** Wall mount bracket **3** DC cable **4** Power wire
5 12V Power **6** Parts package **7** POE cable **8** Indoor chime

Specifications

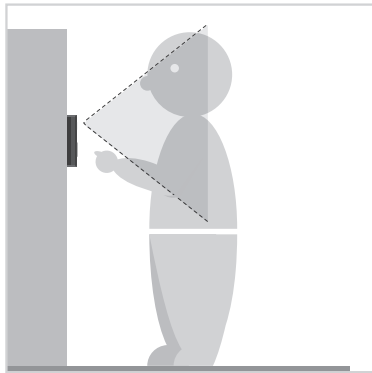
Image Sensor	Image Sensor	1/4" Color CMOS Sensor
	Display Resolution	1920 x 1080
	Viewing Angle	150°
Video	Image Compression	H.264
	Image Frame Rate	25 fps
	Record Mode	Motion detection
Audio	Audio	Two-way Audio
Communication	Wireless Standard	IEEE 802.11b/g/n
	Wire	10/100Mbps
	Infrared Light	Built-in IR LED, Night visibility up to 5 meters
	SD Card	256GB MAX
	Motion Detection	Support
Power	Power Supply	DC 12 ~ 36V, AC 8 ~ 24V
Security	Alarm	Push notification, Tamper alarm
Environment	Operate Temperature	-5° ~ 50°C
	Operating Humidity	20% ~ 85% non-condensing
	Storage Temperature	-10°C ~ 60°
	Storage Humidity	0% ~ 90% non-condensing

Hardware installation -connect to Wi-Fi

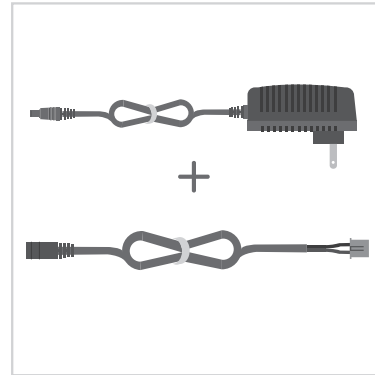
Connect to your home Wi-Fi

1. Connect the ChowBELL via 2.4GHz Wi-Fi. Please make sure your Wi-Fi signal is strong and stable.

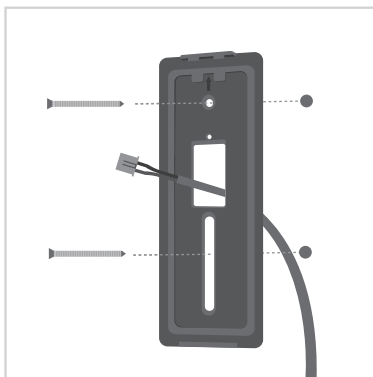
Hardware installation



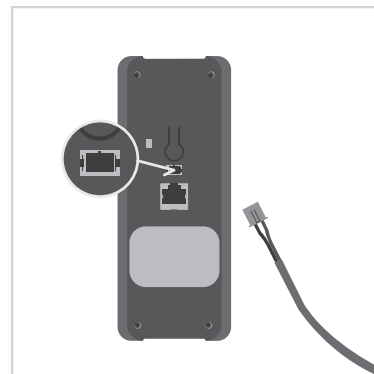
- 1 Choose a proper location for the ChowBELL, be sure to consider the average height of the visitors.



- 2 Connect the 12V Power plug to the DC cable.



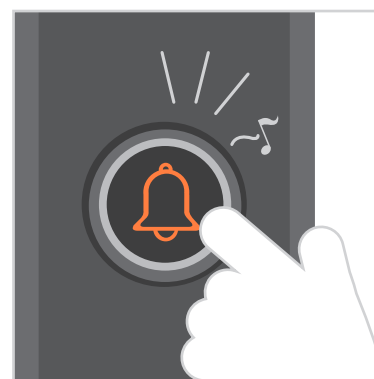
- 3 Align the DC cable and wall mount bracket with the hole on wall; fasten the wall mount bracket.



- 4 Connect the DC cable to the ChowBELL and refer to the **page 7** Connect Chow BELL to Chow! App to finish the connection



- 5 Fasten the ChowBELL on the wall mount bracket with an allen key and a screw from parts package.



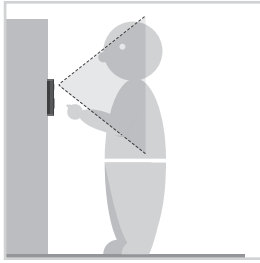
- 6 Press the call button and the ChowBELL will ring when it is well connected to power supply.

Hardware installation - connect to LAN cable

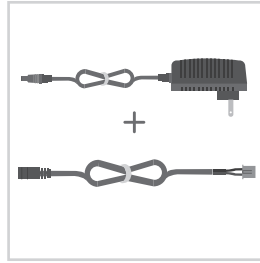
Connect to LAN cable

1. Please connect your ChowBELL to the Wi-Fi network before connect to the LAN cable.
2. ChowBELL has a RJ45 port which is used for connecting to the router with a LAN cable

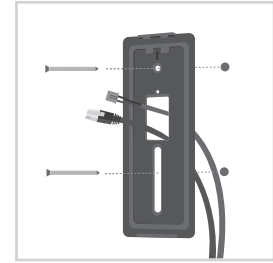
Hardware installation



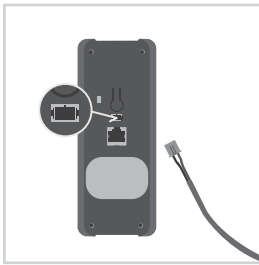
- 1 Choose a proper location for the ChowBELL, be sure to consider the average height of the visitors.



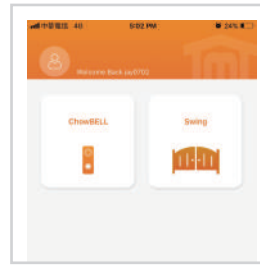
- 2 Connect the 12V Power plug to the DC cable.



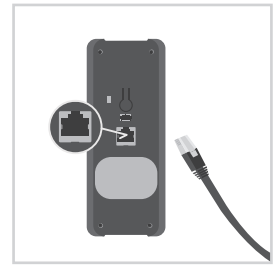
- 3 Align the DC cable, LAN cable (optional) and wall mount bracket with the hole on wall; fasten the wall mount bracket.



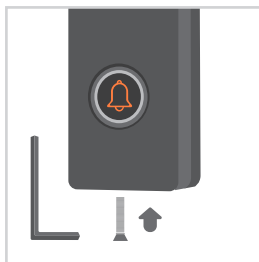
- 4 Connect the DC cable to the ChowBELL



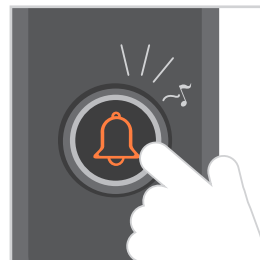
- 5 Please refer to **page 7** Connect ChowBELL to Chow! App to finish the Wi-Fi connection.



- 6 Connect the LAN cable (optional) to the back of the ChowBELL.



- 7 Fasten the ChowBELL on the wall mount bracket with an allen key and a screw from parts package.



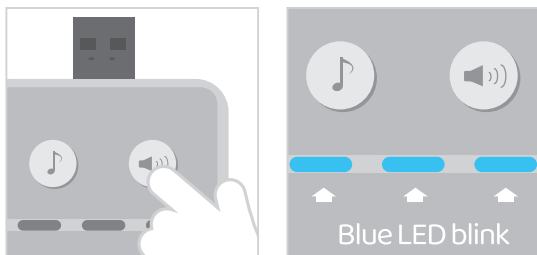
- 8 Press the call button and the ChowBELL will ring when it is well connected to power supply.

6 ***Please make sure the Wi-Fi you connected and the LAN cable are going to connect is shared the same SSID***

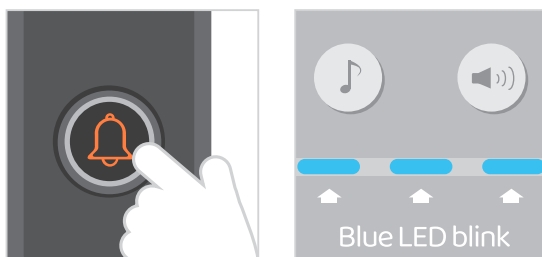
Pairing indoor chime with ChowBELL


Connect the indoor chime to the power via the USB port / USB adaptor, please also ensure ChowBELL is powered.

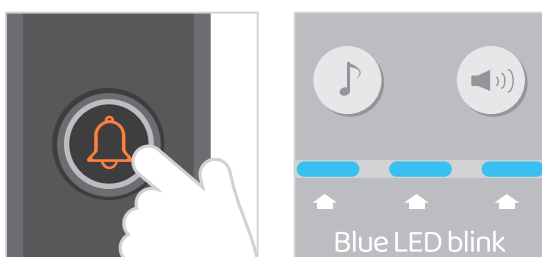
Step1 Press and hold the  button of indoor chime for 3 seconds until the Blue LED blinks.



Step2 Press the  button of ChowBELL, the Blue LED of the indoor chime blinks once.

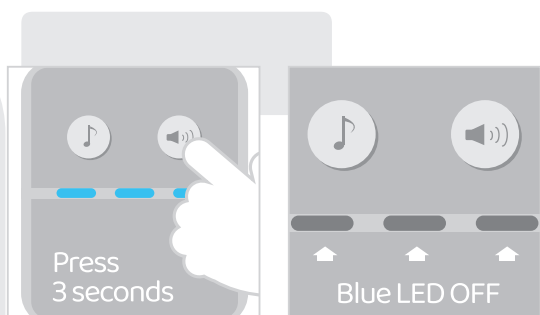


Step3 Press the  button of ChowBELL **again**, and the indoor chime will blink which means the pairing procedure is completed.



NOTE

To disconnect the indoor chime: Press the  button on the indoor chime for 3 seconds until the Blue LED is OFF.



Apply for a new Chow account

1. Please scan the QR code and download the Chow! App
2. Press Sign Up icon and press the agree icon to continue
3. Please type the following information for registration:



- a. Email (enter twice for verification)
- b. Password (enter twice for verification)
- c. The password should have at least 1 English character and at least 8 characters in total

4. The system will send a link to your email when the registration succeeds
5. Please go to your email, and click the link to activate your Chow account
6. Please log in to your Chow account



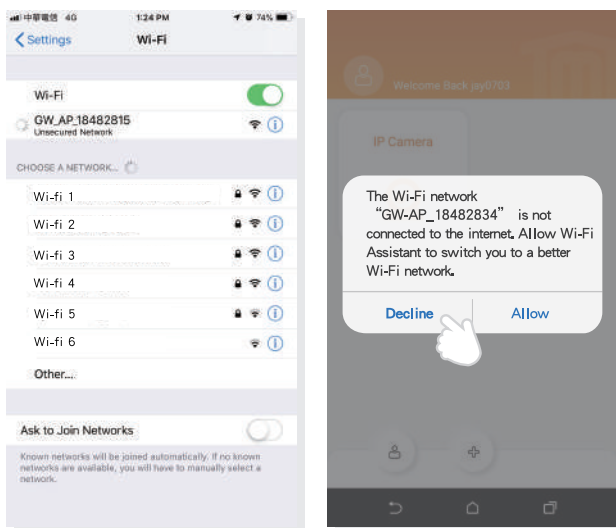
Connect ChowBELL to Chow! App

Step 1 Connect to ChowBELL's AP (1st User - Owner)

Make sure the ChowBELL is perfectly installed and powered.

Switch to your smartphone's Wi-Fi setting page to connect to

"GW_AP_XXXXXXXX" (XXXXXXXX is the UID of the device)



*****Please refer to the FAQ if GW_AP of the ChowBELL cannot be found*****

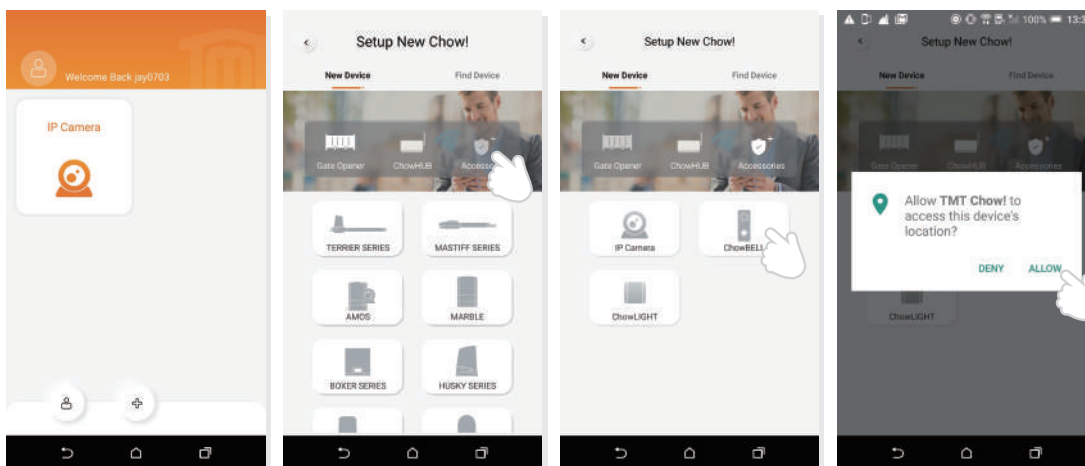
*****Please wait for 20 seconds after connecting the GW_AP device internet*****

*****Please press the decline button when the connection hint shows up*****

Step 2 Add a new ChowBELL

Tap (+) icon to add a new device.

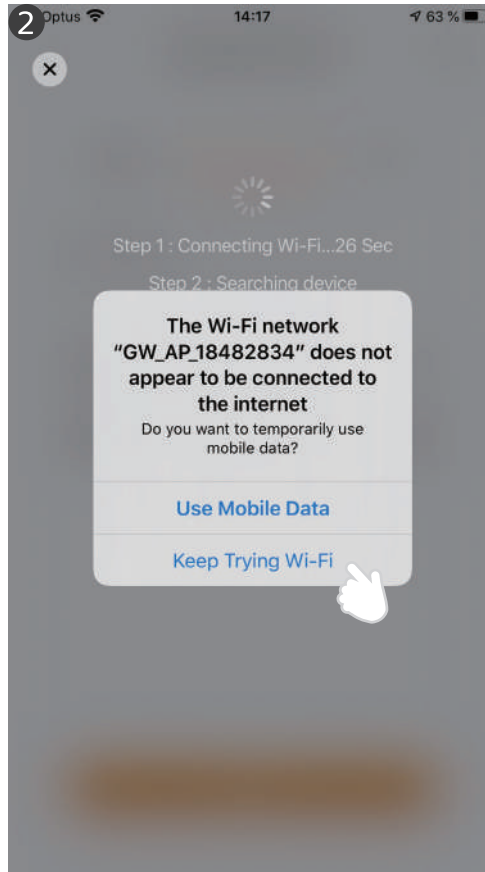
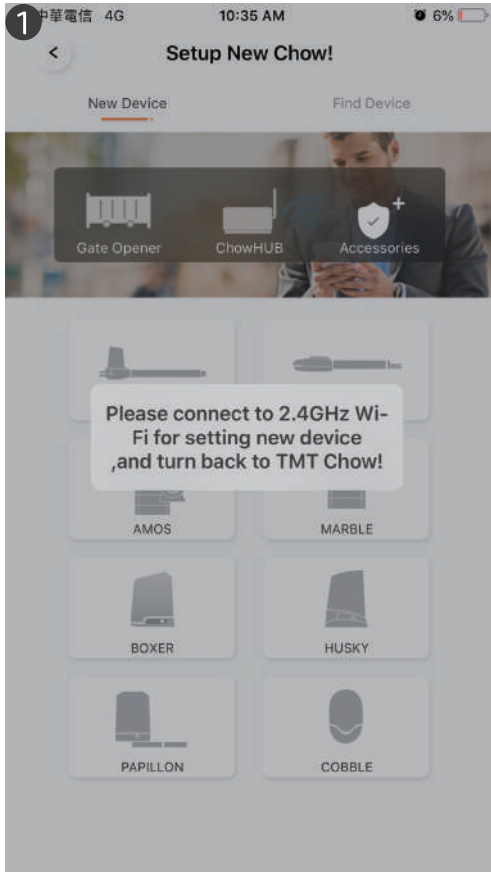
New Device -> Accessories -> ChowBELL



IF With above hint show up, press "ALLOW" for TMT Chow to access your device's location to get the corresponds Wi-Fi source

***** Hint may be vary from different phone system. *****

Step 3 Indications of connection



- 1 When you are adding a new ChowBELL, the App shows "please connect to 2.4Ghz Wi-Fi," but you have already connect to ChowBELL's AP

*****The system takes time to connect to ChowBELL's Ap.**

Please wait till you smart phone shows the Wi-Fi icon on the top of your smart phone screen.

It takes about 20-30 seconds.***

- 2 When doing the connection, the App shows "the ChowBELL's Wi-Fi is not connected to the internet."

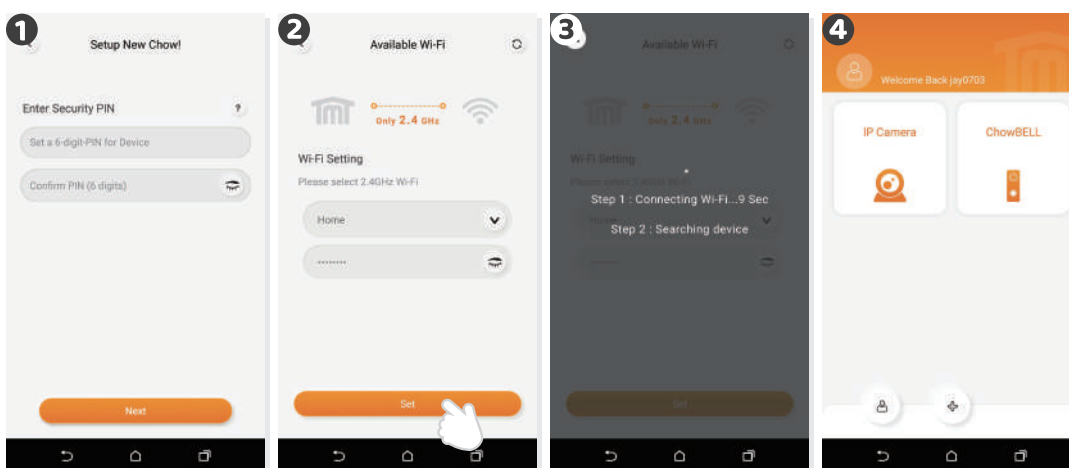
*****A ChowBELL's AP is closed network which is only used for connecting to your home Wi-Fi system.**

Please tap the "Keep Trying Wi-Fi to finish the connection. ****



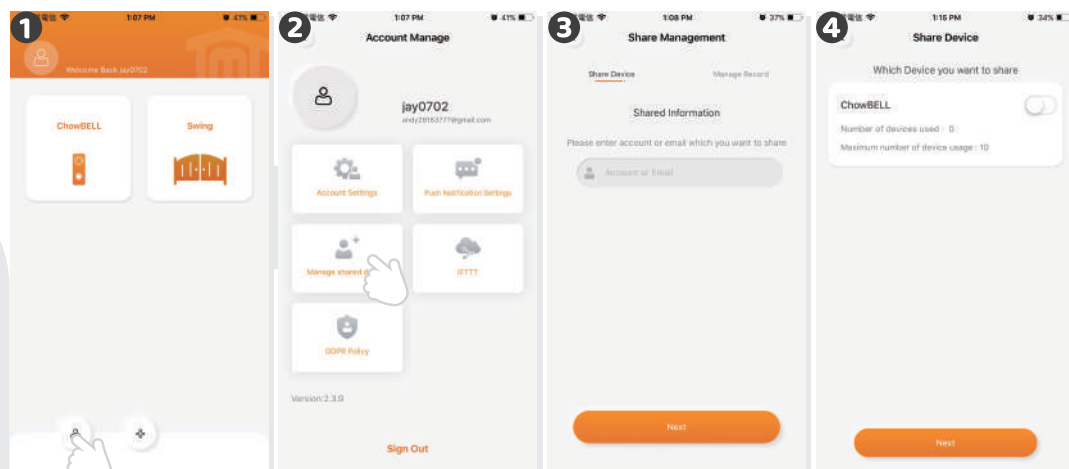
Step 4 Set the PIN code and connect to your home Wi-Fi

- 1 Set the security PIN code. This PIN code is used for device sharing and function setting.
*****Please refer to the FAQ_Question1 if you forgot the password*****
- 2 Select your home Wi-Fi name (Only 2.4G) and enter the correct password.
Tap "SET" button to connect to your home Wi-Fi
*****Please make sure to enter the correct password with the right characters*****
- 3 After the countdown, ChowBELL will appear on the main page.
- 4 Tap the ChowBELL to enter the operation page.
The ChowBELL will send a push notification when below events occur:
visitor calls / alarms / motion detection is triggered.

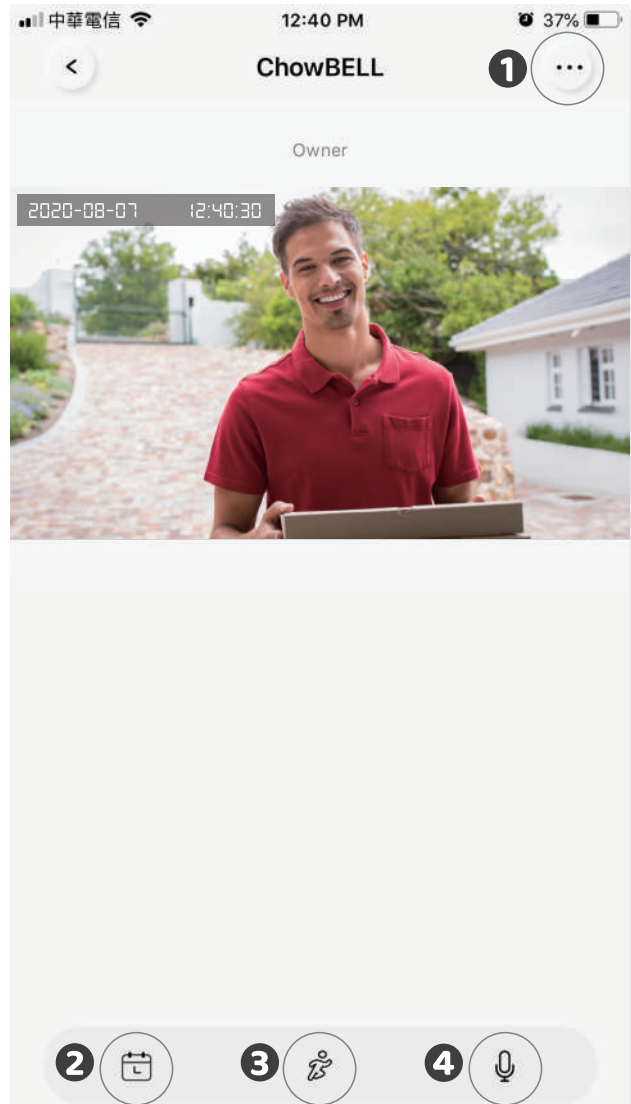


Owner shares the ChowBELL to other users

- 1 The Owner can share the ChowBELL up to 4 users through Chow! App.
- 2 Tap the icon to enter the account information page
- 3 Tap the Manage shared device
- 4 Please enter a user's account
Please select the device which you want to share



Operation page of ChowBELL

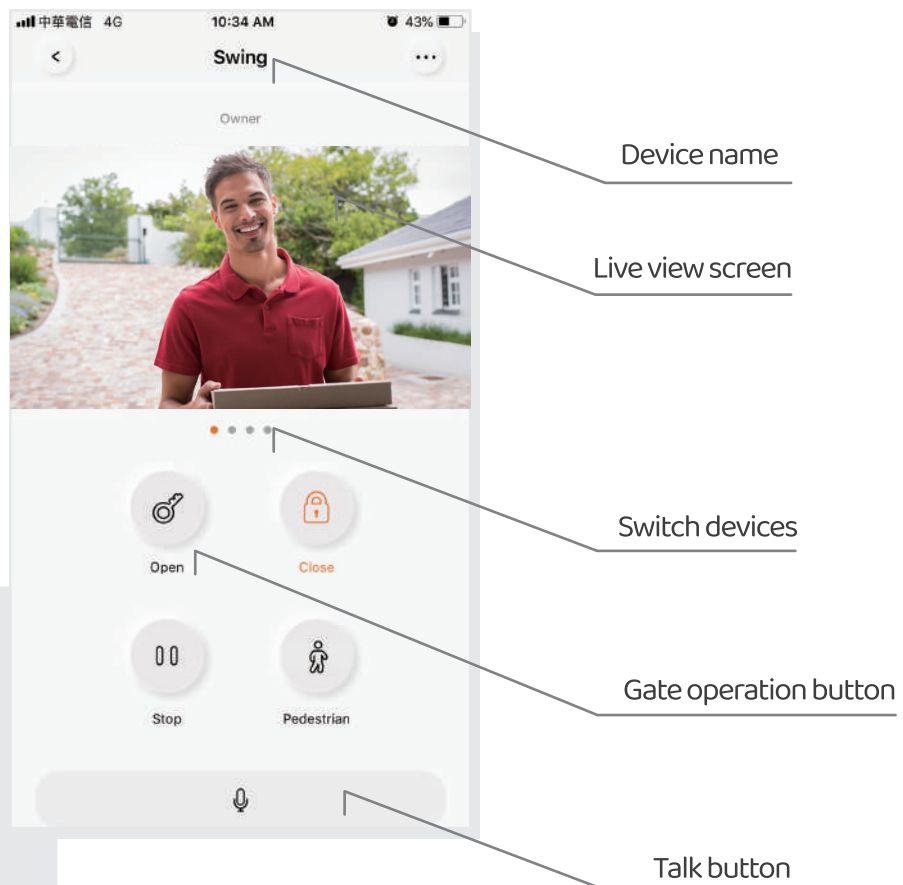
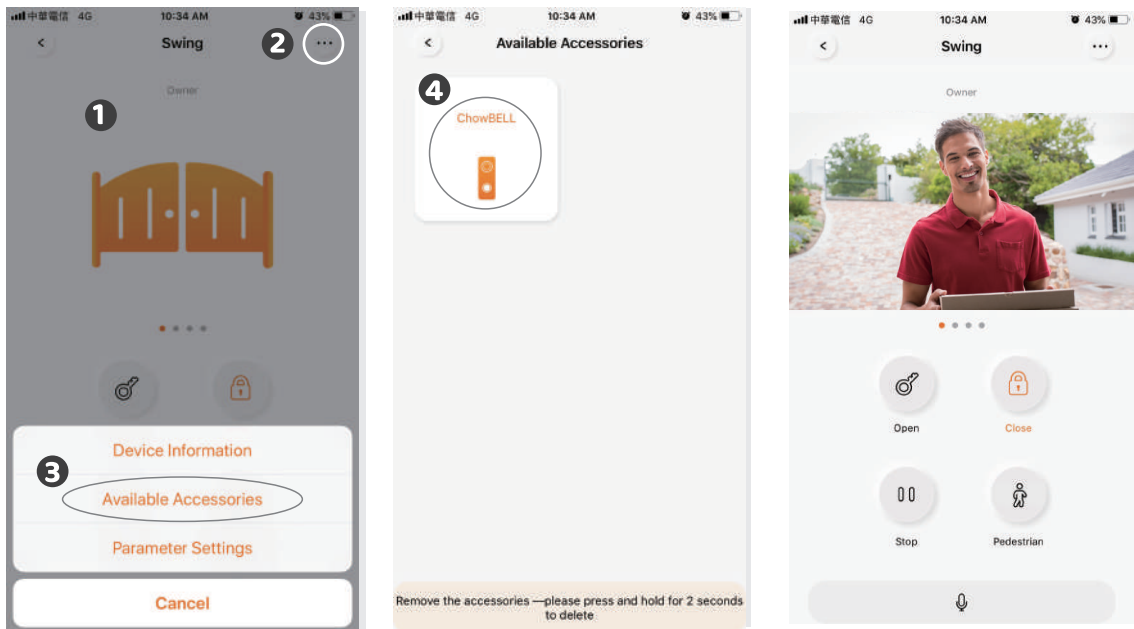


- 1 Setting
- 2 With an extra micro SD card, the recorded videos will be listed in the calendar
- 3 Switch of the Motion detection. You will get notifications when you turn it ON.
- 4 Switch of the two-way audio. Turn ON to start the audio function

Connect your ChowBELL with a gate opener

To connect your ChowBELL to the gate opener, please go the operation page of a gate opener.

- 1 Gate opener operation page
- 2 Settings
- 3 Available Accessories
- 4 Select ChowBELL from the list.



FAQ

Question 1

How to Reset ChowBELL to default setting?

Answer 1

1. Delete the ChowBELL on the Chow! App by long pressing the ChowBELL icon and confirm it.
 2. Press Reset button at the back of the ChowBELL for 5 seconds to reset ChowBELL to default setting.
 3. Please refer to Page7 Connect ChowBELL to Chow! App to reconnect the ChowBELL.
-

Question 2

GW-AP of the ChowBELL can't be found.

Answer 2

Make sure the Wi-Fi setting on the smartphone has been turned on.

Make sure ChowBELL has been set to default setting.

If ChowBELL is connected to the LAN wire, the AP mode will be turned off automatically.

Question 3

Change ChowBELL's Wi-Fi network

Answer 3

ChowBELL control page → Settings → Device Information → Wi-Fi Setting

→ choose available Wi-Fi SSID → Entering Wi-Fi security password → Set

Question 4

Unable to receive notification from my ChowBELL

Answer 4

Go the setting page of the Chow! App

Turn on the switch of notification to receive the notifications

Tn

nt

TMT AUTOMATION INC

